

ANZHFR Future Upgrades

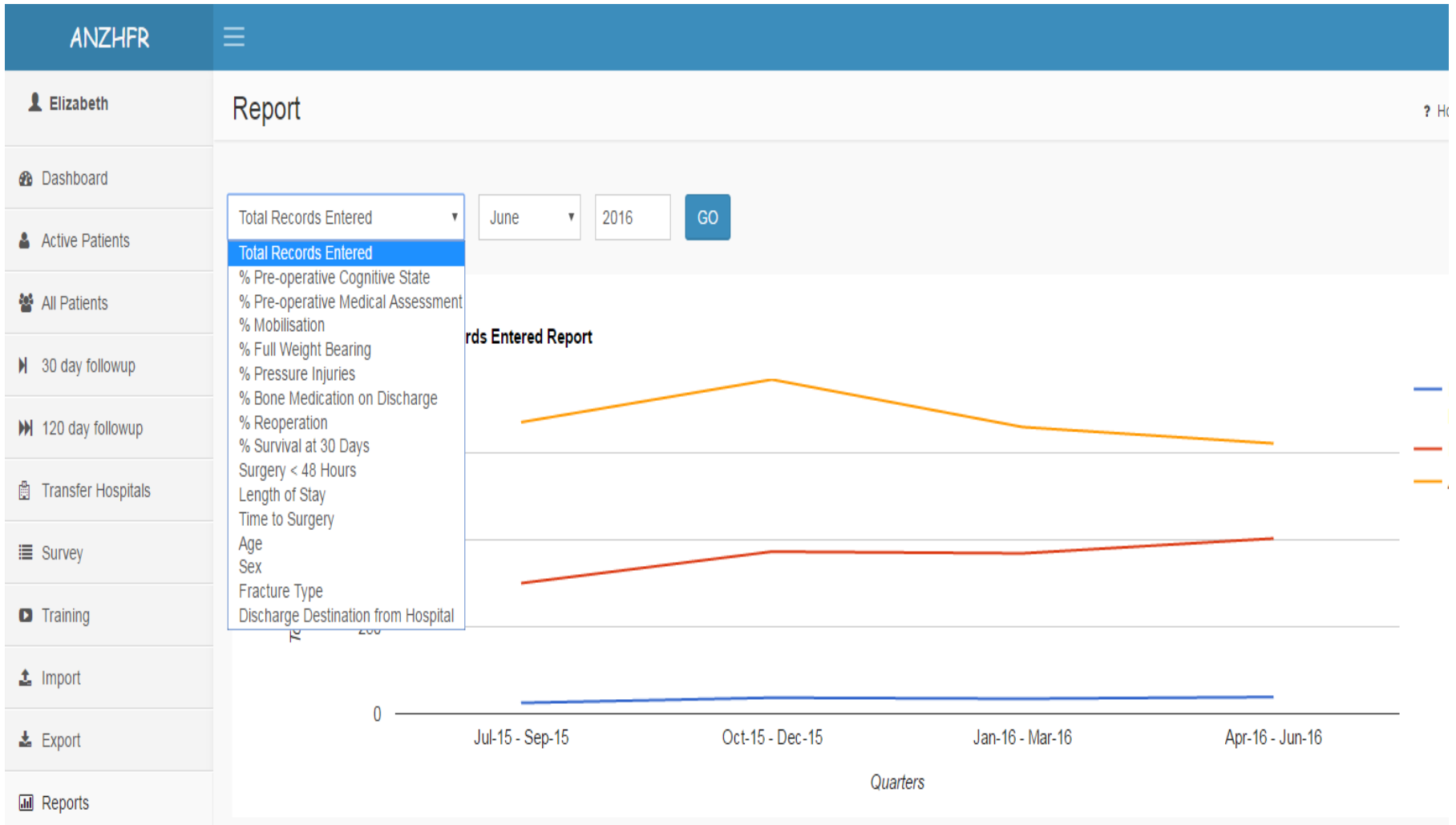
1. Self-Audit Reports
2. Data Dictionary



ANZHFR

Australian & New Zealand Hip Fracture Registry

1. Self-Audit Reports





Elizabeth

Report

Dashboard

Active Patients

All Patients

30 day followup

120 day followup

Transfer Hospitals

Survey

Training

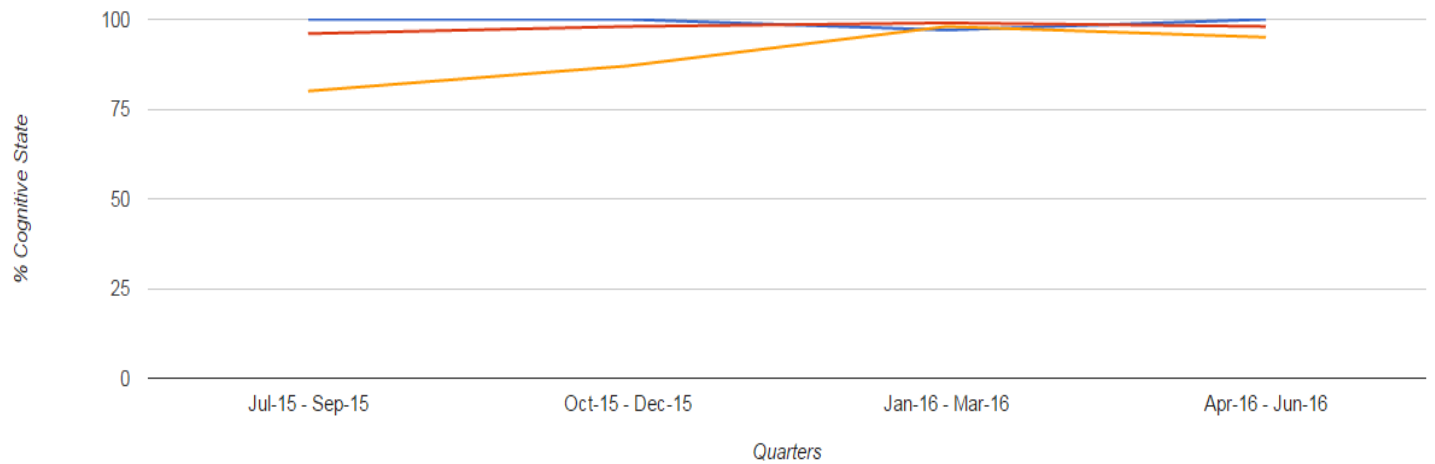
Import

Export

Reports

% Pre-operative Cognitive State June 2016 **GO**

Pre-operative Cognitive State Report



This report shows the percentage of patients where a Cognitive State was recorded per quarter.



Elizabeth

Report

Dashboard

Active Patients

All Patients

30 day followup

120 day followup

Transfer Hospitals

Survey

Training

Import

Export

Reports

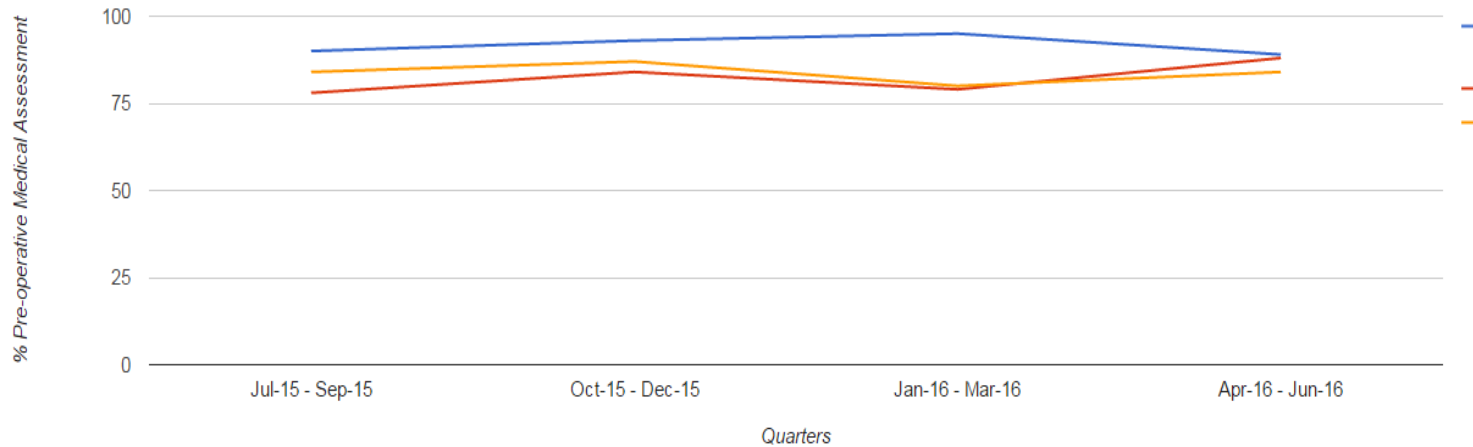
% Pre-operative Medical Assessm

June

2016

GO

Pre-operative Medical Assessment Report



This report shows the percentage of patients where a Medical Assessment was performed (by anyone) per quarter.



Elizabeth

Report

?

Dashboard

Active Patients

All Patients

30 day followup

120 day followup

Transfer Hospitals

Survey

Training

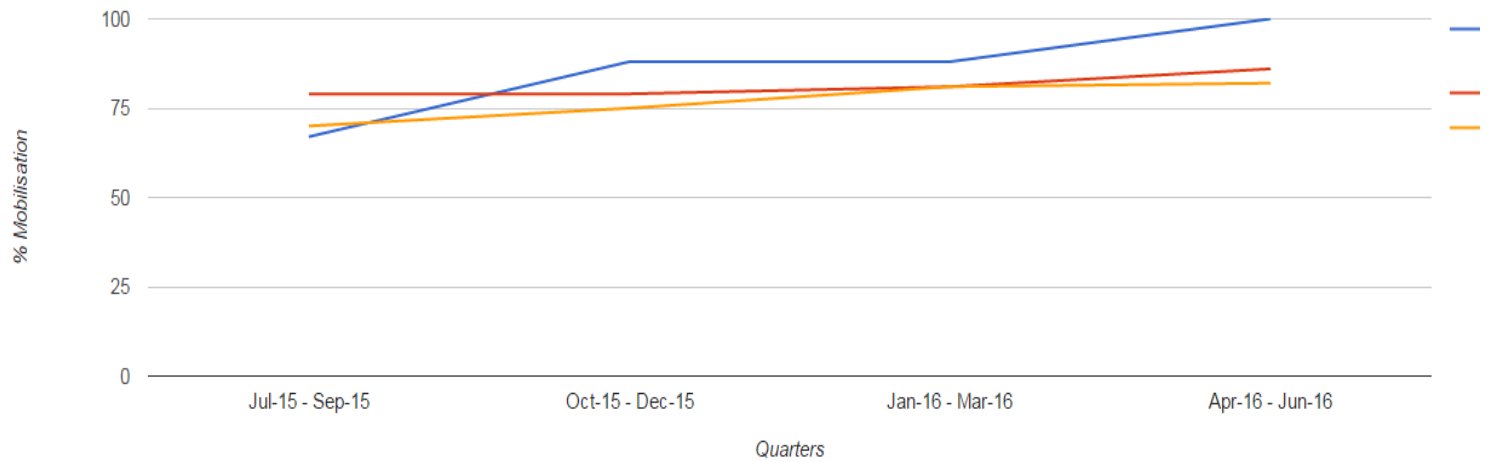
Import

Export

Reports

% Mobilisation June 2016 GO

Mobilisation Report



This report shows the percentage of patients where Mobilisation was offered on Day 1 per quarter.



Elizabeth

Report

?

Dashboard

Active Patients

All Patients

30 day followup

120 day followup

Transfer Hospitals

Survey

Training

Import

Export

Reports

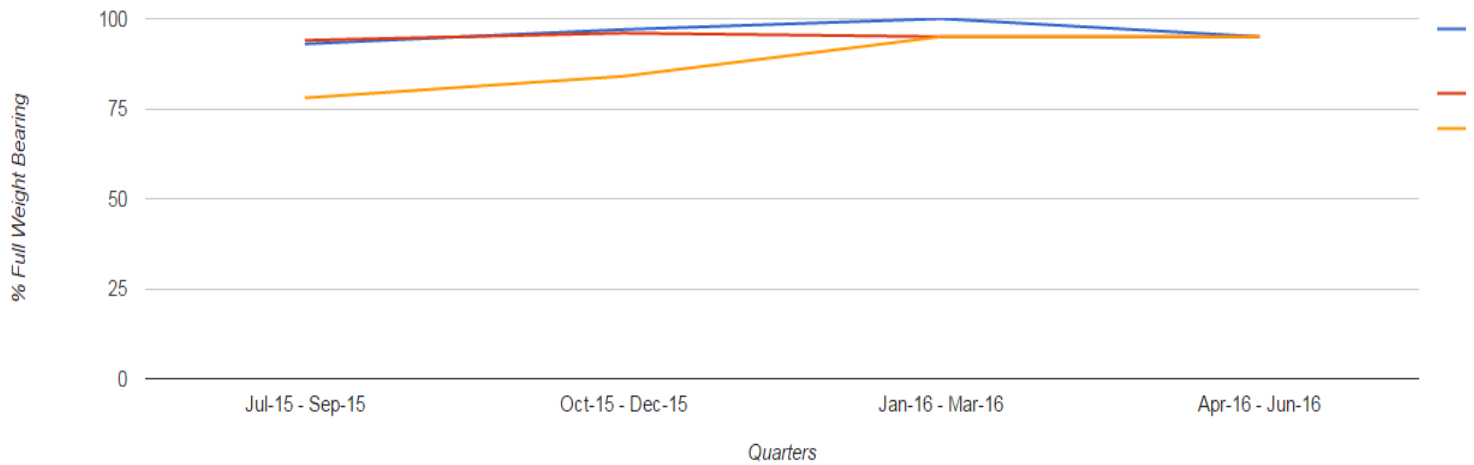
% Full Weight Bearing

June

2016

GO

Weight Bearing Report



This report shows the percentage of patients recorded as Unrestricted Weight Bearing per quarter.



Elizabeth

Report

?

Dashboard

Active Patients

All Patients

30 day followup

120 day followup

Transfer Hospitals

Survey

Training

Import

Export

Reports

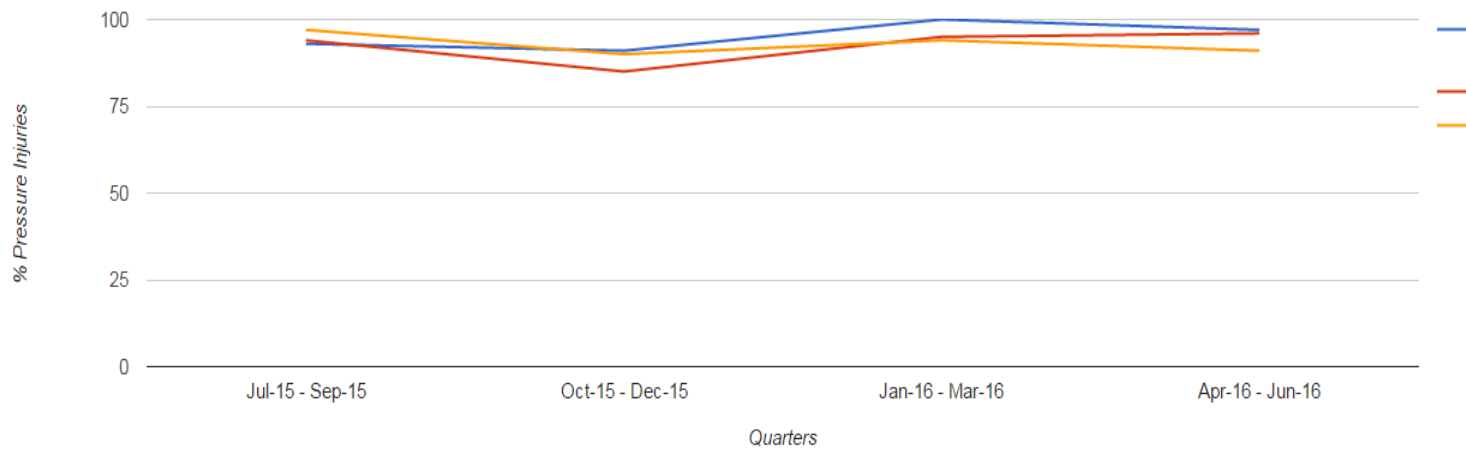
% Pressure Injuries

June

2016

GO

Pressure Ulcers Report



This report shows the percentage of patients without new Pressure Injuries of the skin recorded per quarter.



Elizabeth

Report

?

Dashboard

Active Patients

All Patients

30 day followup

120 day followup

Transfer Hospitals

Survey

Training

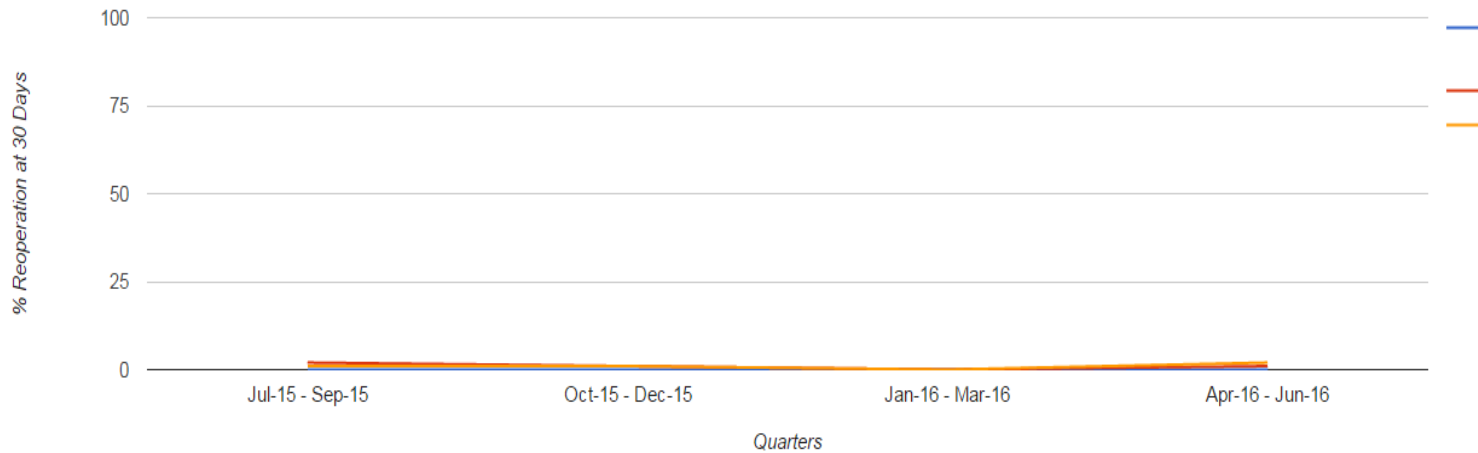
Import

Export

Reports

% Reoperation 2016

Reoperation at 30 Days Report



This report shows the percentage of patients with any reoperation at 30 days recorded per quarter.

Surgery < 48 Hours

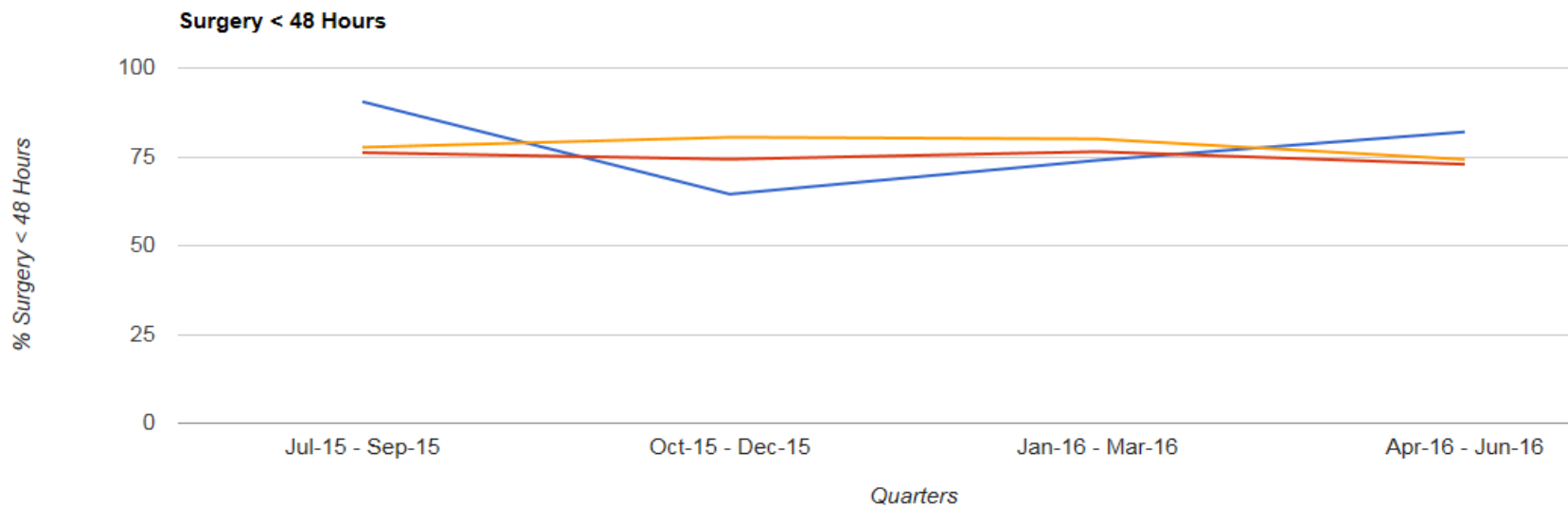


June



2016

GO



This report shows the percentage of patients where Time To Surgery < 48 hours per quarter.



Elizabeth

Report

?

Dashboard

Active Patients

All Patients

30 day followup

120 day followup

Transfer Hospitals

Survey

Training

Import

Export

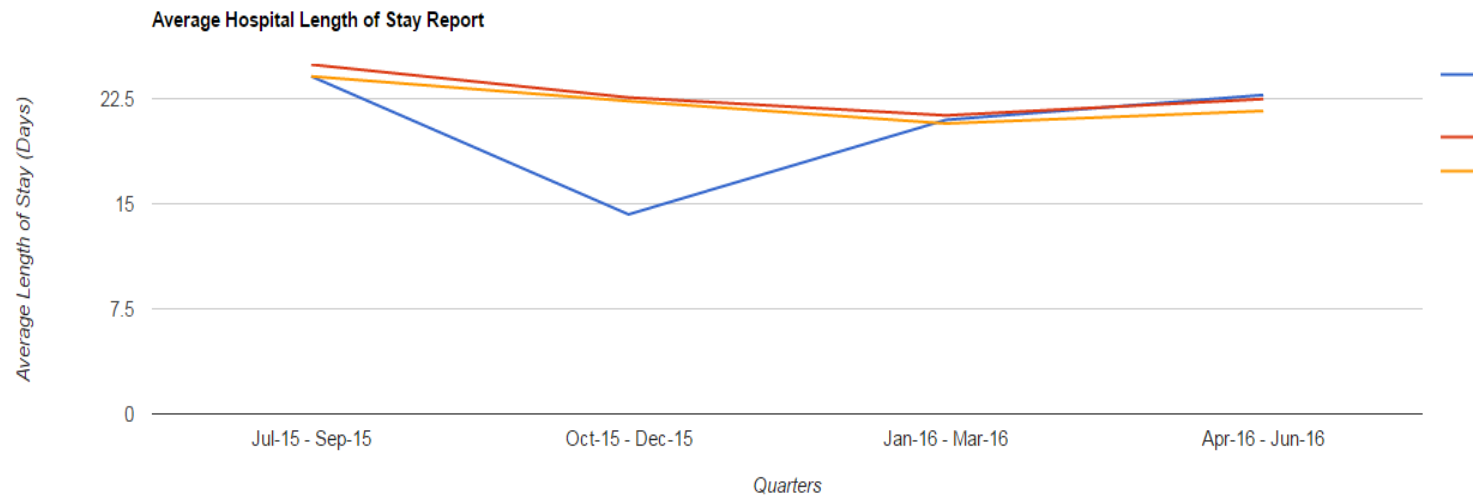
Reports

Length of Stay

June

2016

GO



This report shows the average Hospital Length of Stay recorded per quarter.



Elizabeth

Report

Dashboard

Active Patients

All Patients

30 day followup

120 day followup

Transfer Hospitals

Survey

Training

Import

Export

Reports

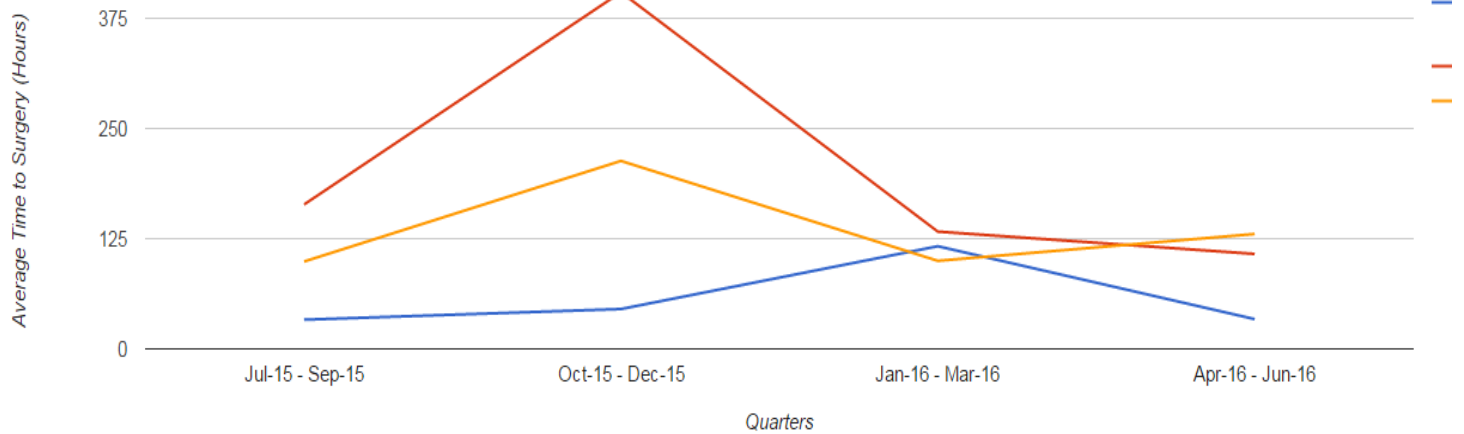
Time to Surgery

June

2016

GO

Time to Surgery Report



This report shows the average Time to Surgery recorded per quarter.



Elizabeth

Report

Dashboard

Active Patients

All Patients

30 day followup

120 day followup

Transfer Hospitals

Survey

Training

Import

Export

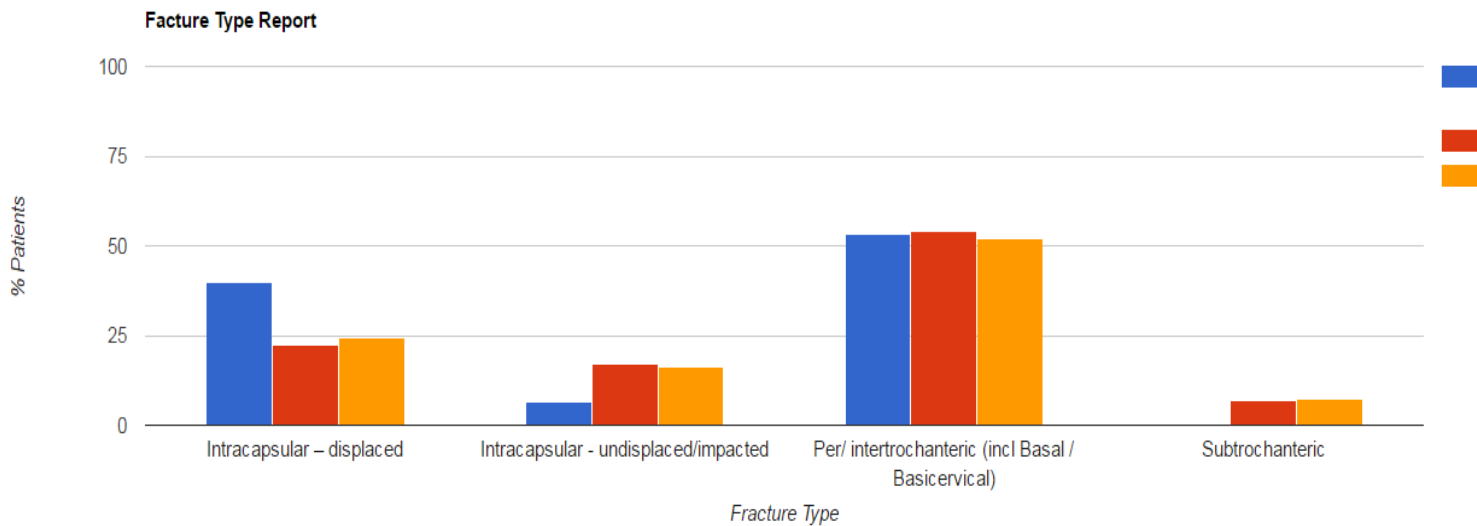
Reports

Fracture Type

June

2016

GO



This report shows the percentage of patients by Fracture Type for the given month.



Elizabeth

Report

?

Dashboard

Active Patients

All Patients

30 day followup

120 day followup

Transfer Hospitals

Survey

Training

Import

Export

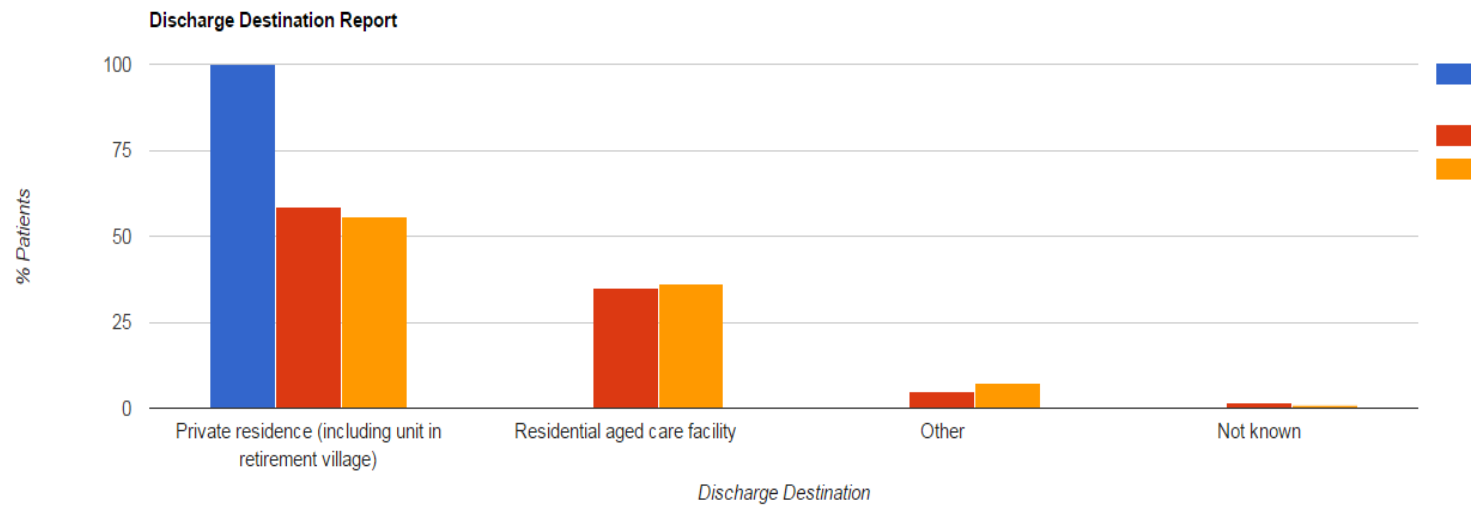
Reports

Discharge Destination from Hospi

June

2016

GO



This report shows the percentage of patients by Discharge Destination for the given month.

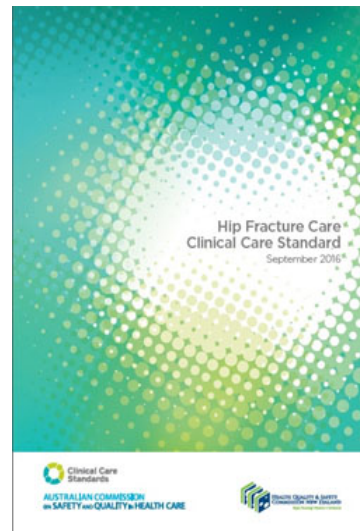
2. Data Dictionary



Data Dictionary

FINAL

Dec 2013



Data Dictionary

Version ~~8.1~~9.0

~~December 2013~~September 2016

Data Dictionary - need for review

1. Patient Level Audit - ensure it is fit-for-purpose
 2. Facility Level Audit - ensure standardised data collection
 3. Feedback from participating hospitals
- Metadata for the Clinical Care Standard Indicators available at:
<http://meteor.aihw.gov.au/content/index.phtml/itemId/628043>

Review

ACSQHC Standards and Indicator Set for Hip Fracture Care

#	Standards and Indicators	ANZHFR Variable	Indicator Description	Notes
QS1	Care at Presentation		A patient presenting to hospital with a suspected hip fracture receives care guided by timely assessment and management of medical conditions, including diagnostic imaging, pain assessment and cognitive assessment.	
1a	Evidence of local arrangements for the management of patients with hip fracture in the emergency department	10.02	Documented local arrangements for the management of hip fracture patients in the ED. Documentation may be in the form of local protocols and/or a clinical pathway.	How does the registry verify the documentation? What constitutes adequate documentation?
1b	Proportion of patients with a hip fracture who have had their pre-operative cognitive status assessed	3.02 and/or 3.03	Following admission to hospital a hip fracture patient has their preoperative cognitive status assessed using a validated tool and recorded	Registry is specific to AMTS but the indicator allows a number of different validated tools. What are the changes that need to be made to the variable(s)?

Minor change existing variables

Variable Number	6.01
Variable	30 day follow-up date
Variable Name	fdate1
Definition	Date on which the 30 day follow-up was conducted completed post the initial hip fracture surgery.
Justification	To monitor patient outcomes post-surgery
Format	8 digit date, date in DDMMYYYY
Status	Core
Coding Source	National Health Data Dictionary, Version 15
Coding Frame	DDMMYYYY
DD Comments	Date not known is entered as: 99999999



ANZHF

Australian & New Zealand Hip Fracture Registry

Major change existing variables

Indicator 1b: Proportion of patients with a hip fracture presenting to hospital who have had their pre-operative cognitive status assessed

The numerator includes patients with a hip fracture where, following the patient's admission to hospital, their pre-operative cognitive status is **assessed** using a **validated tool**, and **recorded**.

Some validated tools for assessing cognitive function include:

- Abbreviated Mental Test Score (AMTS) (Hodkinson 1972)
- Standardised Mini-Mental State Examination (SMMSE) (Molloy & Standish 1997)
- Modified Mini Mental State Exam (3MS) (Teng & Chui 1987)

Other tools may be more appropriate for some people from culturally and linguistically diverse groups, such as the Rowland Universal Dementia Assessment Scale (RUDAS) (Storey et al. 2004) and the Kimberly Indigenous Cognitive Assessment (LoGiudice et al. 2006) tools.

Indicator 1b – existing variables

Variable	Pre-operative AMTS
Variable name	amts
Definition	Pre-operative Abbreviated Mental Test Score (AMTS).
Justification	To enable the identification of the cognitive ability of the patient.
Format	2 digit numeric
Status	Core data item
Coding frame	99
Comments	Patient scores a point for each correct answer from 10 questions. A score of 6 or less suggests evidence of cognitive impairment.

Variable	Pre-operative cognitive status
Variable Name	cogstat
Definition	What was the pre-operative cognitive status of the patient?
Justification	To enable the identification of the pre-operative cognitive status of the patient
Format	1 digit numeric
Status	Core
Coding Frame	1 Normal cognition 2 Impaired cognition or known dementia 8 Not assessed 9 Not known
Comments	Normal cognition refers to 'no history of cognitive impairment or dementia'. Impaired cognition or known dementia refers to a 'loss of cognitive ability and/or a decline in memory or other thinking skills severe enough to reduce a person's ability to perform everyday activities' (Alzheimer's Association).

New variables

Indicator 2b: Proportion of patients with a hip fracture who have a documented assessment of pain within 30 minutes of presentation to the emergency department and either receive analgesia within this time or do not require it according to the assessment

- Not currently collected in the ANZHFR



ANZHFR

Australian & New Zealand Hip Fracture Registry

Facility Level Audit

- Variables will be defined and added to the Data Dictionary
- Example below:

Variable	Hip fracture pathway
Variable name	hipfrac_path
Definition	Do you have an agreed hip fracture pathway?
Justification	To determine if the hospital has documented local arrangements for the management of patients with hip fracture in the emergency department
Format	Numerical, N
Status	core
Coding frame	0 No 1 Yes - ED only 2 Yes - whole acute journey
Comments	Indicator 1a Quality Standard 1 Care at Presentation Documentation may be in the form of local protocols and/or a clinical pathway.



ANZHFR

Australian & New Zealand Hip Fracture Registry

Registry Q & A



ANZHFR

Australian & New Zealand Hip Fracture Registry